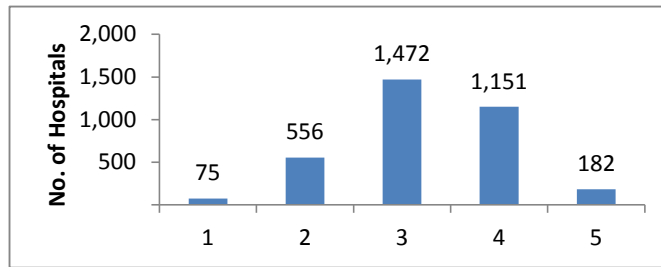


HCAHPS Stars Ratings Distributions for April 2017 Public Reporting (N= 3436 Hospitals)

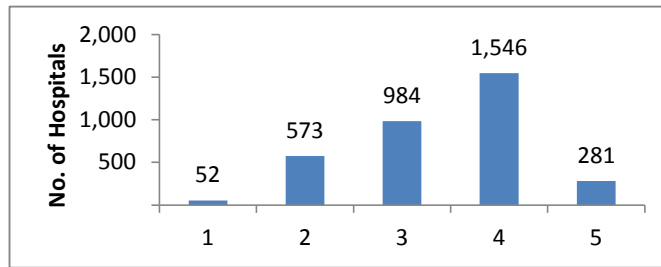
HCAHPS Summary Star Rating

Star Rating	N	%
1	75	2
2	556	16
3	1,472	43
4	1,151	33
5	182	5



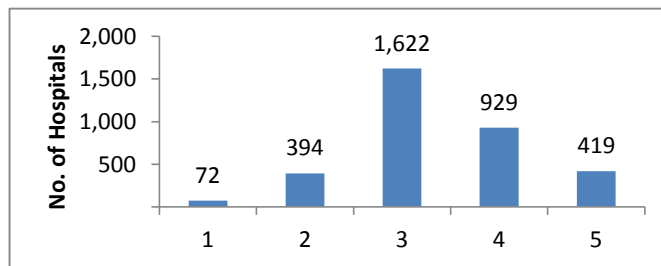
Communication with Nurses

Star Rating	N	%
1	52	2
2	573	17
3	984	29
4	1,546	45
5	281	8



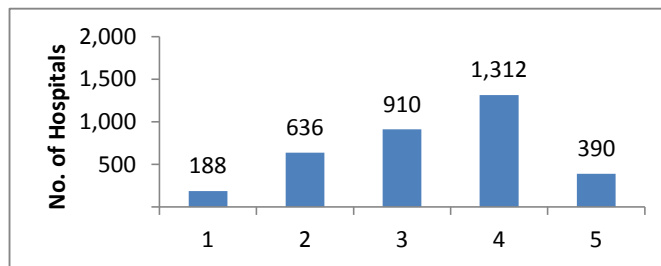
Communication with Doctors

Star Rating	N	%
1	72	2
2	394	11
3	1,622	47
4	929	27
5	419	12



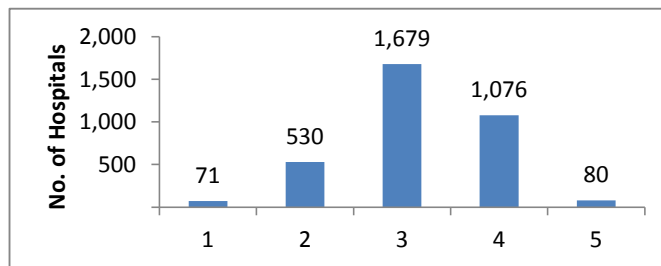
Responsiveness of Hospital Staff

Star Rating	N	%
1	188	5
2	636	19
3	910	26
4	1,312	38
5	390	11



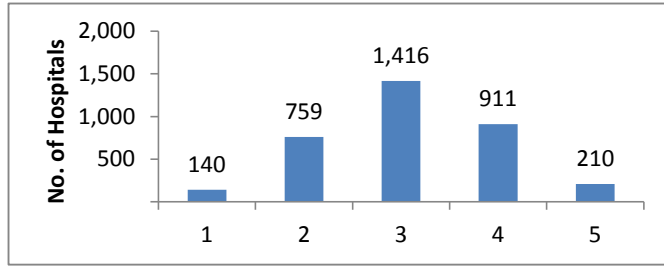
Pain Management

Star Rating	N	%
1	71	2
2	530	15
3	1,679	49
4	1,076	31
5	80	2



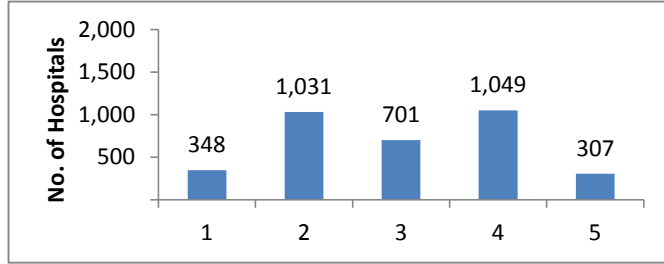
Communication about Medicines

Star Rating	N	%
1	140	4
2	759	22
3	1,416	41
4	911	27
5	210	6



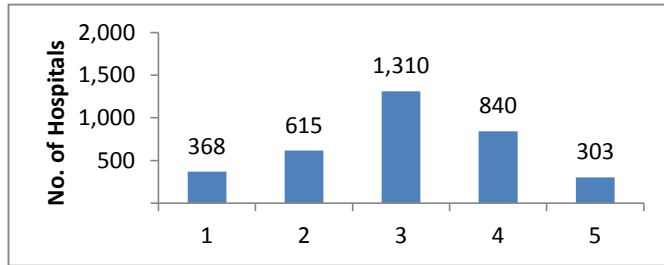
Cleanliness of Hospital Environment

Star Rating	N	%
1	348	10
2	1,031	30
3	701	20
4	1,049	31
5	307	9



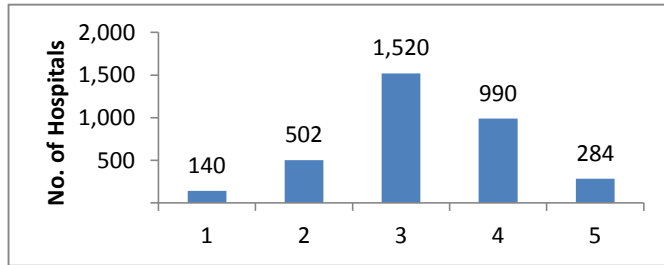
Quietness of Hospital Environment

Star Rating	N	%
1	368	11
2	615	18
3	1,310	38
4	840	24
5	303	9



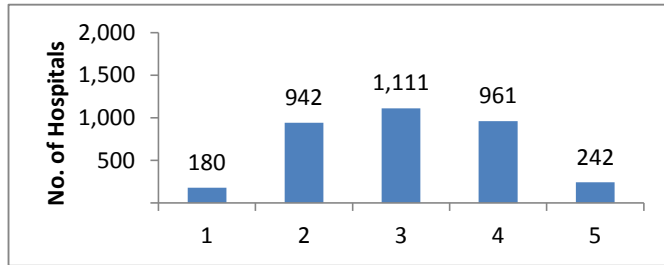
Discharge Information

Star Rating	N	%
1	140	4
2	502	15
3	1,520	44
4	990	29
5	284	8



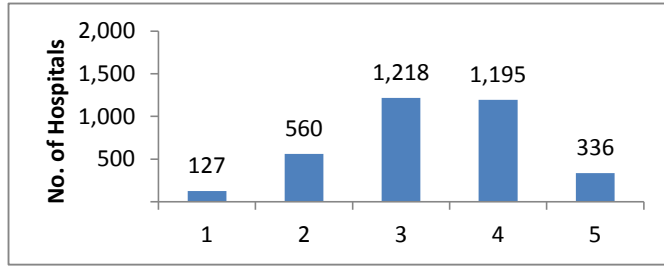
Care Transition

Star Rating	N	%
1	180	5
2	942	27
3	1,111	32
4	961	28
5	242	7



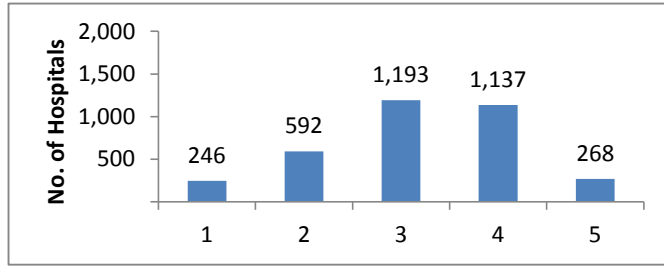
Hospital Rating

Star Rating	N	%
1	127	4
2	560	16
3	1,218	35
4	1,195	35
5	336	10



Recommend the Hospital

Star Rating	N	%
1	246	7
2	592	17
3	1,193	35
4	1,137	33
5	268	8



*These results encompass all hospitals that received HCAHPS scores. Because not all hospitals report their results on Hospital Compare, the values on that Web site may differ from those shown here.

Notes

3436 Hospitals received HCAHPS Star Ratings in April 2017

HCAHPS Star Ratings are based on patients discharged between July 2015 and June 2016

For more information about HCAHPS Star Ratings visit <http://www.hcahponline.org/StarRatings.aspx>

Please use the following citation when referencing material on this website:

<http://www.hcahponline.org> Centers for Medicare & Medicaid Services, Baltimore, MD.

Month, Date, Year the page was accessed.